

# LEGENDA



A) BLOCCETTO DI GIUNZIONE



B) VITE TSPD L.55x3,9



C) VITE TSP L.6x4,5



D) VITE TSP L.8x4,5



E) PIEDINO + BLOCCETTO DI GIUNZIONE, con foro centrale filettato



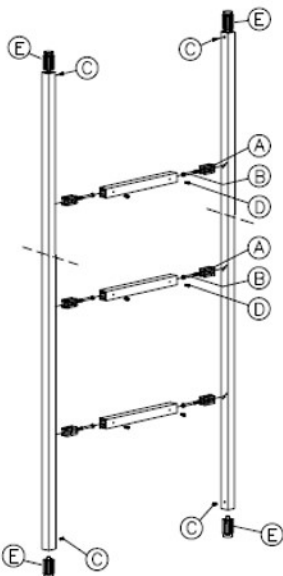
F) VITE L.15x3,5

CACCIVITE STELLA

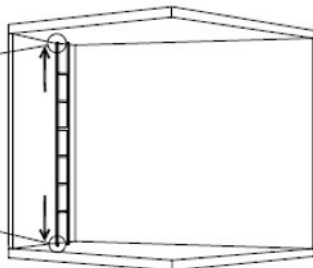
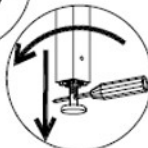
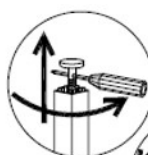
CHAVE ESAGONALE Nr.4



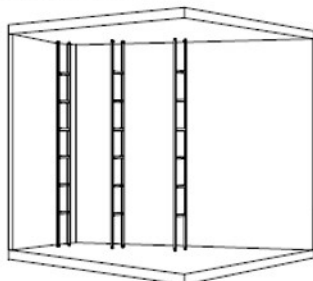
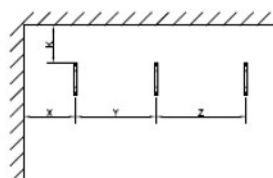
## 1- ASSEMBLAGGIO SPALLA



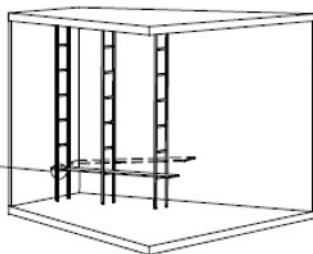
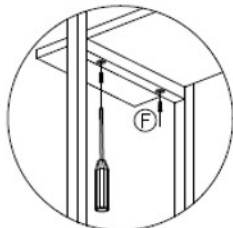
## 2 - BLOCCAGGIO, IN PRESSIONE, DELLA SPALLA, TRA PAVIMENTO E SOFFITTO.



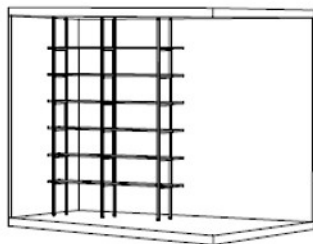
## 3 - POSIZIONARE, ALLINEARE E BLOCCARE LE VARIE SPALLE DELLA COMPOSIZIONE NELLA POSIZIONE DESIDERATA CONSIDERANDO L'INGOMBRA DEI RIPIANI.



## 4 - INFILARE I RIPIANI DI LATO E BLOCCARLI CON LE VITI L.15X3,5.



## 5 - COMPLETARE CON GLI ULTERIORI RIPIANI.



tre.o kitchens

Via Campagna, 36  
31020 San Polo d. Piave (TV)  
Tel. +39 0422 7508  
mail: [fiducia@tre.o.it](mailto:fiducia@tre.o.it)

PROJECT

ACCESSORISTICA

REV./TITLE

ISTRUZIONI MONTAGGIO STRUTTURA \*ONLY 25x25 BASIC\*

CODE

I.M.010

AMBY-

DATE

12/05/2017

SCALE

1:10

SHEET

1 of 1

DWG

REV#

0.0

THIS DRAWING AND ALL THE CONCEPTS, DETAILS, PLANS AND LAYOUTS HERE REPRESENTED ARE EXCLUSIVE PROPERTY OF tre.o AND ARE BEING DEVELOPED FOR THE PROJECT LISTED ABOVE. ANY REPRODUCTION OR ANY OTHER USE IS STRICTLY PROHIBITED WITHOUT THE WRITTEN CONSENT OF tre.o S.p.A.